



## Cold Frame Assembly Instructions



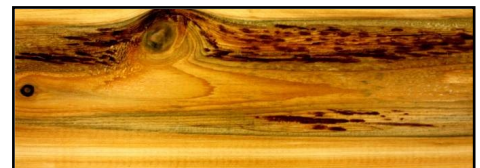
Thank you for your purchase of Maine Garden Product's Cedar Cold Frame, constructed of **Eastern White Cedar** for its natural rot resistance.

For optimum and carefree performance, we recommend using the **9033 Univent Automatic Opener for Cedar Cold Frame** which we have specially designed to automatically open and close the cover of the Cold Frame to prevent overheating.

### Cedar Disclaimer

The Cedar we use grows in swampy areas in northern Maine and New Brunswick, Canada. Because of this, it is well suited for outdoor use and will not rot or decay for decades. Each board has its own personality due to the natural crooked grain of each tree. Some boards have a tendency to "check" (i.e.: form cracks in the grain) while they dry as a result of the crooked grains. Checking is a natural function of the drying process and it does not affect the structural integrity of the board or leg.

The "grade" of cedar we use is "Number 1, One Face". This means only one side of each board is guaranteed to be free of defects like wane (bark) edge or mild decay as shown below.



Maine Garden Product's Cedar Cold Frame is guaranteed to meet or exceed the quality described above. While it is possible for you to receive a product that has no checking and has #1 grade on all surfaces, it is not necessarily the norm. Please don't hesitate to call or email us with quality issues, bearing in mind that all the imperfections shown here are part of the character and charm of Eastern White Cedar.

**MAINE GARDEN PRODUCTS, INC**

67 LAGRANGE RD PO BOX 274 HOWLAND, ME 04448  
TEL. (207) 613-2973 FAX (207) 236-2006



## **Cold Frame Assembly Instructions**

### **Parts List**

- (1) Assembled Rear Wall
- (1) Assembled Front Wall with polycarbonate window
- (2) Assembled tapered side walls
- (2) Clear polycarbonate lid panels
- (4) Frame pieces for lid
- (1) Center divider for lid
- (1) Wood Strut with 2 holes for venting top cover
- (1) T-15 Torx bit
- (50) #8 x 7/8" Phillips head screws
- (2) #8 x 1" Pan head T15 screws
- (4) #8 x 1 3/4" R4 T15 screws
- (8) #8 x 1 3/8" R4 T15 screws
- (1) #8 x 2" R4 T15 screws

### **Tools Needed**

- Drill (cordless if possible)
- Phillips Head Bit

### **(Parts List con't.)**

- (1) Set of hinges for lid
- (2) T- Brackets
- (4) L- Brackets
- (3) T- Hinges
- (1) Bottle Titebond Wood Glue
- (1) Set of 4 stakes

### **Step 1. Preparation**

Unpack and lay out the front, back and side panels, noting that the vertical strips face inward, and the side panels are shorter in the front (see picture below).



**MAINE GARDEN PRODUCTS, INC**

67 LAGRANGE RD PO BOX 274 HOWLAND, ME 04448

TEL. (207) 613-2973 FAX (207) 236-2006



## **Cold Frame Assembly Instructions**

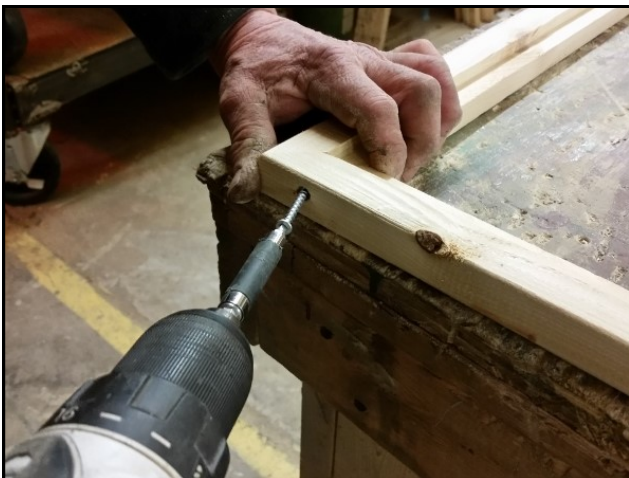
### **Step 2. Wall Assembly**

Place a thin layer of glue on the edges of a panel. Slide the panel into the groove to make the corner. Repeat with all sides until your box is complete (see pictures below).



### **Step 3. Top Cover Assembly**

A.) Find a flat area large enough for the lid to be assembled. A table works best so the corners are exposed to facilitate installing the screws. Lay the four similar sides in a square. Each corner has 1 predrilled hole. Firmly hold one corner together and install a #8 x 1 5/8" ceramic coated screw. Repeat until you have three sides put together



**MAINE GARDEN PRODUCTS, INC**

67 LAGRANGE RD PO BOX 274 HOWLAND, ME 04448

TEL. (207) 613-2973 FAX (207) 236-2006





## Cold Frame Assembly Instructions

### Step 3. Top Cover Assembly

- B.) Remove the plastic film from the glazing and place the side that had the printed film down in one side of the frame. Place the center wood divider in the frame and slide the notch up tight against the first piece of glazing. Remove the film from the second piece of glazing and place it on the other half of the frame. It should make a fairly tight fit in the frame with the other piece of glazing and the center divider.
- C.) With everything in place slide the last remaining piece of the frame in place and attach with screws



- D.) Install the "L" brackets on each corner and the "T" brackets on each end of the center divider using #8 x 7/8" screws
- Attach the wooden strut on top of the front "T" bracket as shown in the last pic using #8 x 7/8" screws. On the inside of the frame attach a #8 x 2" cabinet screw, centered, leaving 3/4" of the screw out of the board



**MAINE GARDEN PRODUCTS, INC**

67 LAGRANGE RD PO BOX 274 HOWLAND, ME 04448  
TEL. (207) 613-2973 FAX (207) 236-2006



## **Cold Frame Assembly Instructions**

### **Step 4. Install Top Cover**

Lay the frame on top of the assembled sides of the cold frame. Using the #8 x 7/8" screws, attach hinges to the frame and rear wall of the cold frame.



### **Step 5. Hinge Installation**

From the back cleat measure over 12" and attach the bottom part of the hinge with one of the #8 x 1" panhead screws. Fully extend the hinge and from the back of the lid measure 13" and using (2) #8 x 7/8 screws, attach the hinge to the coldframe lid. Repeat for the other side.



Your coldframe is now ready to use! Place directly on the ground or use with our 4'x4' raised bed.

Included you will also find a set of 4 stakes. These are great for added stability and recommended for use when stacking the coldframe with the raised bed. Simply stick the stake into the ground at each corner and attach with screws, one into the coldframe and one into the raised bed

**MAINE GARDEN PRODUCTS, INC**

67 LAGRANGE RD PO BOX 274 HOWLAND, ME 04448  
TEL. (207) 613-2973 FAX (207) 236-2006



### **Optional stakes**

Stakes can be used for additional stability for your cold frame or cold frame and raised bed combination. Simply push a stake into the ground at each corner and using the included screws, attach to the cold frame.

If you are using with the cold frame and raised bed, once you have the cold frame on top of the raised bed, push a stake into the ground at the corner, making sure that it extends up high enough onto the cold frame to use a screw. Attach one screw into the raised bed and a second screw into the cold frame.

**MAINE GARDEN PRODUCTS, INC**

67 LAGRANGE RD PO BOX 274 HOWLAND, ME 04448  
TEL. (207) 613-2973 FAX (207) 236-2006





## **Installing the Optional 9033 Univent Automatic Opener**

The original Univent instructions are included with the 9033 Univent Automatic Opener, but have limited usefulness as our application is slightly different.

### **Step 1 Univent Assembly**

1. Remove the Univent from the box and open the plastic bags of parts.
2. This step is also explained on the Univent instruction sheet should you have any questions. Take the black cylinder and thread it into the holder, lining it up with the sleeve at the same time. Thread it only a few turns, not all the way. Find the smaller of the wire clips and insert it thru the hole in the sleeve and piston rod. Use the hole closest to the end of the piston rod. Push it firmly in place so it won't fall out.

### **Step 2 Mounting Plate Assembly**

On the inside of the front panel locate the center of the top board. Attach the mounting plate with the top of the plate 1 1/8" from the top of the board like the picture to the right.



### **Step 3 Attaching the Automatic Opener to Top Cover**

Turn the cover over and locate the center board of the top cover. There is a mounting plate already attached to the automatic opener. Attach the mounting plate to the center board 1 11/16" from the front edge of the top cover as shown in the picture on the right.



### **Step 3 Attaching the Automatic Opener to Front Wall**

Squeeze the mounting arms together and slide it onto the mounting bracket as shown in the picture to the right and in figure #7 of the Univent instructions.



**Univent Adjustment** - the only adjustment is the threading in or out of the cylinder – with the temperature cool enough so you'd like the door to be closed, adjust the cylinder until the top cover begins to open. This sets the temperature that the cold frame will open for ventilation.

**MAINE GARDEN PRODUCTS, INC**

67 LAGRANGE RD PO BOX 274 HOWLAND, ME 04448

TEL. (207) 613-2973 FAX (207) 236-2006