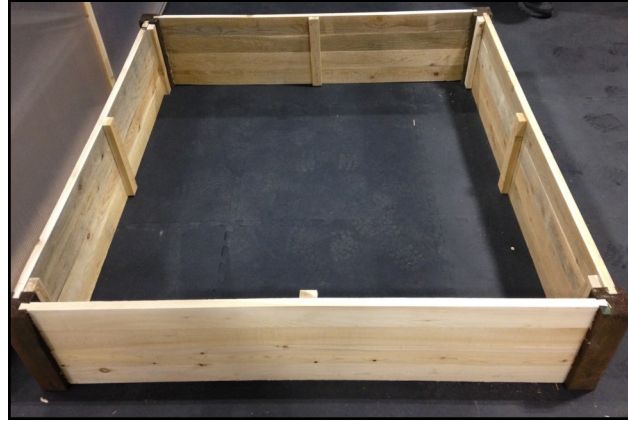




## 4' x 4' Raised Bed Assembly Instructions

### Parts List

- 2 - 4' Cedar raised bed sides with attached stained corners
- 2 - 4' Cedar raised bed sides without attached corners

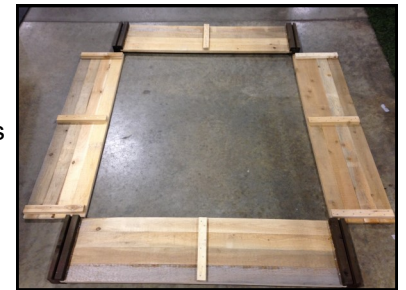


### Tools Needed

None

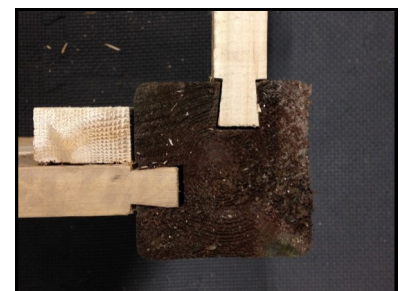
### Step 1

The raised bed has four pre-assembled cedar sides. The front and back sides come with the 2" x 2" stained corners already attached. The other two sides have a sliding dovetail joint that will connect to the attached corners. To start, lay out the four sides as shown in the picture to the right with the sides that have the attached corners opposite from one another. Lay out the sides without the attached corners opposite from one another.



### Step 2

Set the front and back side up on end using the attached corners to keep them upright. Line up the sliding dovetail joints in the corners and push down on the ends applying equal pressure to both sides. When assembled they will be connected as shown in the picture to the right. Repeat this step for the other side.



### Step 3

Fill your raised bed with your favorite type of soil and watch your plants grow.

**Happy Gardening!!**

**MAINE GARDEN PRODUCTS, INC**

67 LAGRANGE RD, HOWLAND, ME 04448

PHONE: (207)236-2600 • FAX: (207)236-2006

WWW.MAINEGARDEN.COM • INFO@MAINEGARDEN.COM